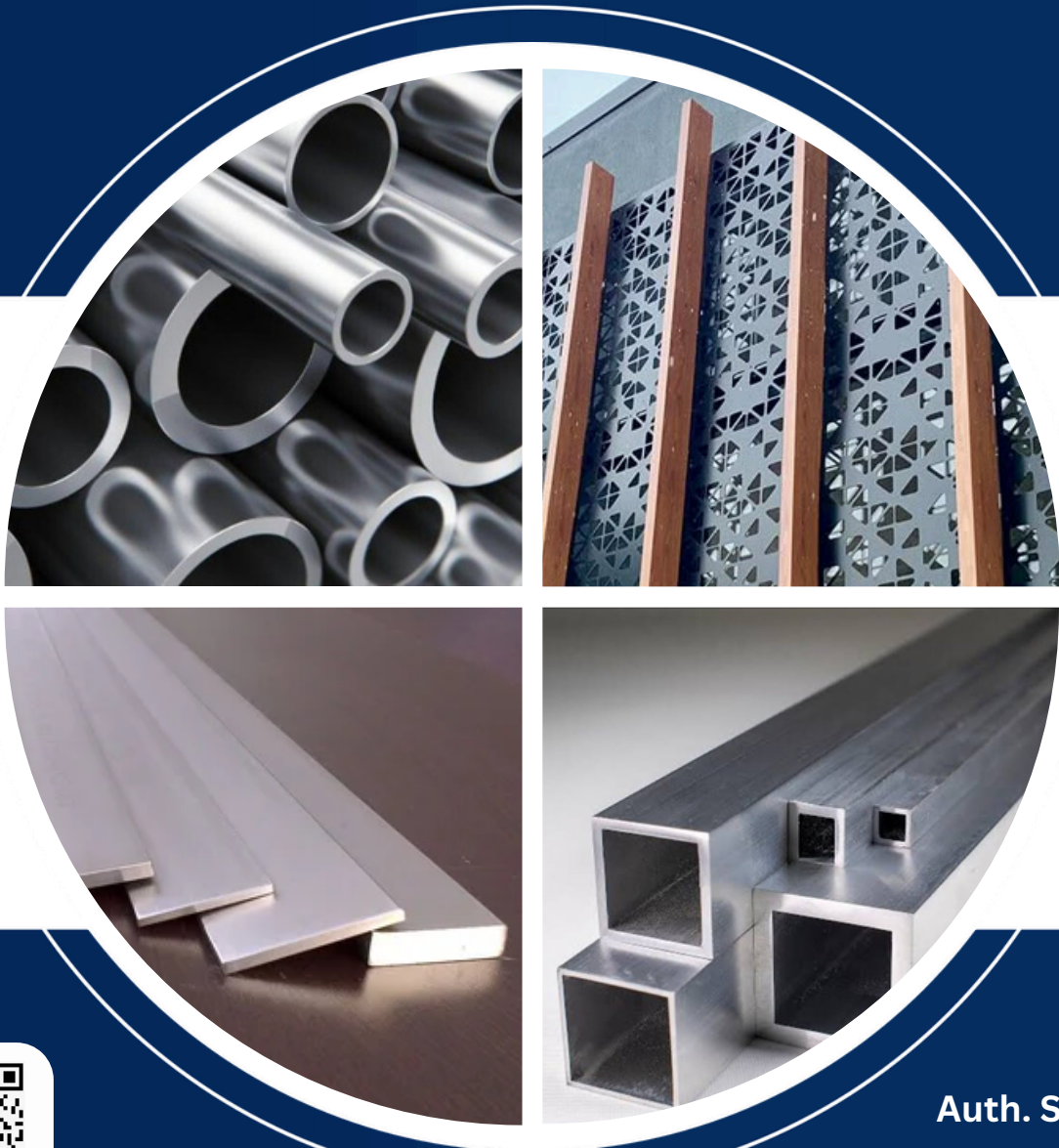




# Kohli Aluminium

PAHARGANJ NEW DELHI



**KOHLI ALUMINIUM**  
Paharganj

Auth. Stockist:-





# INTRODUCTION

Most homeowners are often looking for ways to improve their homes' look and feel. One of the best ways to do this is by incorporating aluminium designs. Aluminium is incredibly versatile and resilient, making it an excellent choice for a variety of applications. It's also often cheaper than various other metal components, making it an affordable option. As such, more and more homeowners are opting for aluminium designs over other materials for specific design applications.

Aluminium has been used for decades in a variety of products and designs, but recently, the metal has become increasingly popular with its use in home design. For example, aluminium can often be found in modern wall panelling and kitchen cabinetry. Furthermore, aluminium designs have started to appear in both interior and exterior doors. Aluminium makes for an excellent choice for doors because of its durability and strength, yet light weight.

In addition to doors, aluminium can also be found in various intricate and decorative home accessories. For instance, aluminium can be used to craft fixtures such as kitchen backsplashes, switchplates and ceiling fans. Furthermore, outdoor home accessories such as outdoor tents, awnings, or even outdoor furniture can also be crafted from aluminium. While aluminium may be a lighter weight compared to other metals, its durability and affordability are qualities that often make it a better choice for various applications in the home.

Ultimately, aluminium offers homeowners an amazing option for various design uses in the home. As a material that's cheaper than most other metals and incredibly resilient, aluminium is a great option for home design. Furthermore, aluminium has recently become quite trendy as it's often used in the latest designs and products. Therefore, if you're looking for ways to improve your home's look and feel, aluminium is definitely a great material to consider.





# ABOUT US

**Auth-Stockist Jindal Aluminium Ltd.Hindalco**

## ABOUT US

Kohli Aluminium is one of India's leading aluminium trading and wholesale-retail companies. Established in 1994, we have grown over the years to become a respected name in the industry.

Kohli Aluminium is engaged in sourcing, supply and distribution of aluminium products to meet the needs of customers across a variety of industries, including aeronautical, transport, food & beverage, electrical, construction and many more. Our team of experts provides personalised services and innovative solutions to meet our clients' needs, from the simplest to the most complex requests.

We pride ourselves on being a reliable supplier of aluminium products, offering a comprehensive range of standard, customized and innovative product solutions. Our team is composed of an intelligent mix of professionals and technicians, each with extensive expertise in product selection, design and fabrication.

We have state-of-the-art facilities to fulfil our customer requirements and adhere to the stringent quality control parameters and international standards. Our quality assurance processes ensure that each product is checked fully before despatch.

At Kohli Aluminium we strive to offer the best quality products and services with the highest level of customer service and satisfaction. Our mission is to establish strong and lasting business relationships with our customers and serve them in the best possible manner.



Nature of Business  
**Manufacturer**



Year of Establishment  
**1994**



Legal Status of Firm  
**Individual - Proprietor**



GST Number  
**07AIUPK5028N1ZL**



For More Information

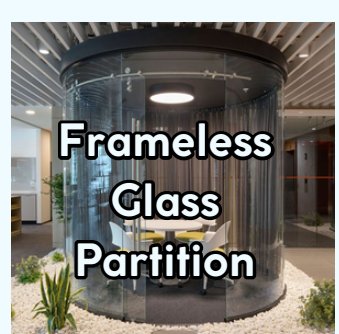
**9811141923, 8800705899**

Visit Now

**www.kohli aluminium.com**



# INDEX



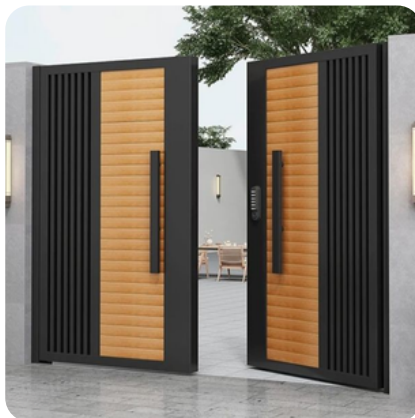




# ALUMINIUM PROFILE GATE

## OUR PRODUCTS

- Rust-Free & Corrosion Resistant
- Modern Aesthetic Design
- Low Maintenance
- Customizable Sizes & Designs
- Termite & Pest Proof



For More Information

**9811141923, 8800705899**

Visit Know

**[www.kohlialuminium.com](http://www.kohlialuminium.com)**





# KINETIC FACADE

## OUR PRODUCTS

- Dynamic & Responsive Design
- Modern & Eye-Catching Aesthetic
- Smart Integration Available
- Sustainable & Eco-Friendly
- Enhances Building Lifespan



For More Information

**9811141923, 8800705899**

Visit Know



**[www.kohlialuminium.com](http://www.kohlialuminium.com)**

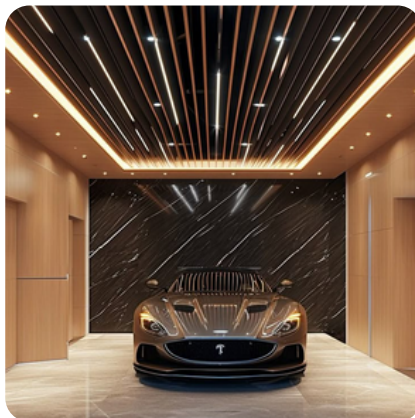
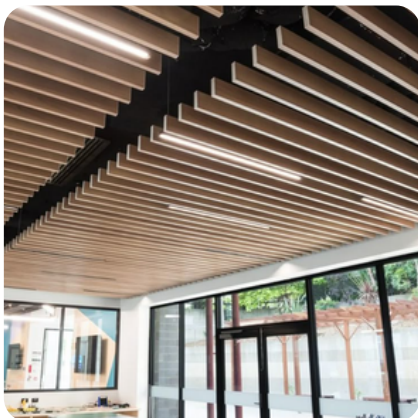
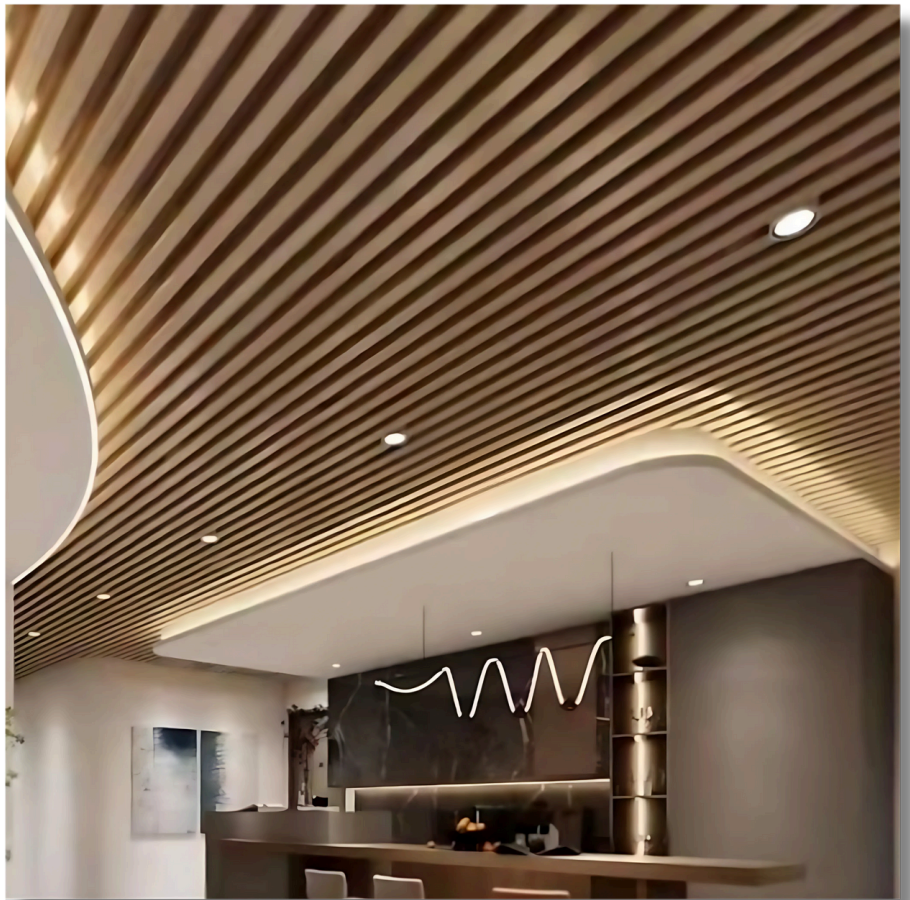




# ALUMINIUM BAFFLE CEILINGS

## OUR PRODUCTS

- Sleek & Modern Look
- Lightweight Structure
- Customizable Shapes & Finishes
- Ideal for Various Applications
- Excellent Acoustic Performance



For More Information

**9811141923, 8800705899**

Visit Know

**[www.kohlialuminium.com](http://www.kohlialuminium.com)**

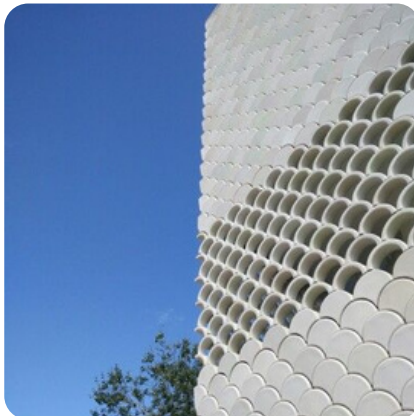
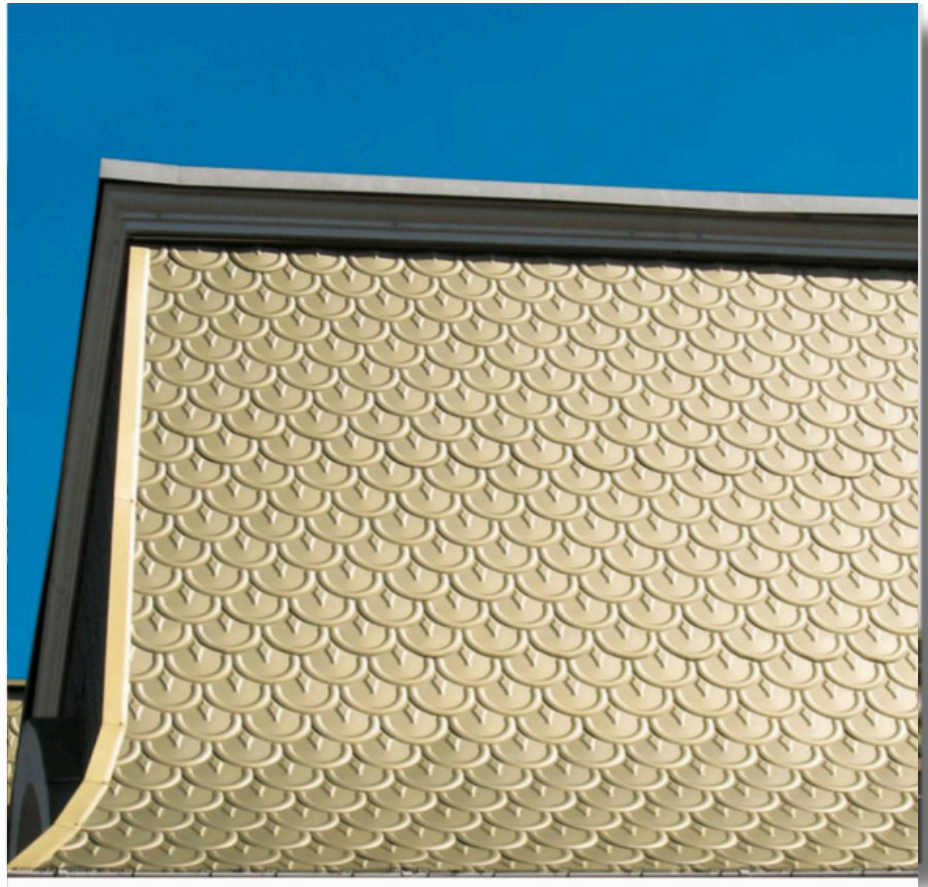




# ALUMINIUM SHINGLES

## OUR PRODUCTS

- Unique Aesthetic Appeal
- Premium Aluminium Material
- Excellent Weather Resistance
- Easy to Install & Maintain
- Architectural Impact



For More Information

**9811141923, 8800705899**

Visit Know

**[www.kohli aluminium.com](http://www.kohli aluminium.com)**







# ALUMINIUM WIRE MESH

## OUR PRODUCTS

- Sleek & Modern Look
- Lightweight Structure
- Customizable Shapes & Finishes
- Ideal for Various Applications
- Excellent Acoustic Performance



For More Information

**9811141923, 8800705899**

Visit Know

**[www.kohlialuminium.com](http://www.kohlialuminium.com)**

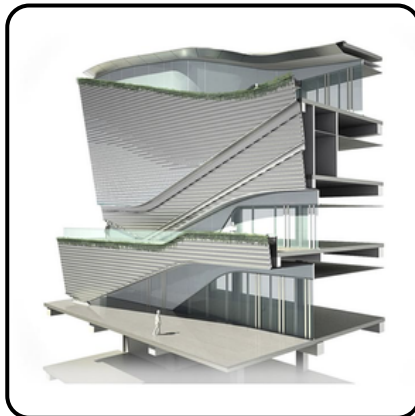
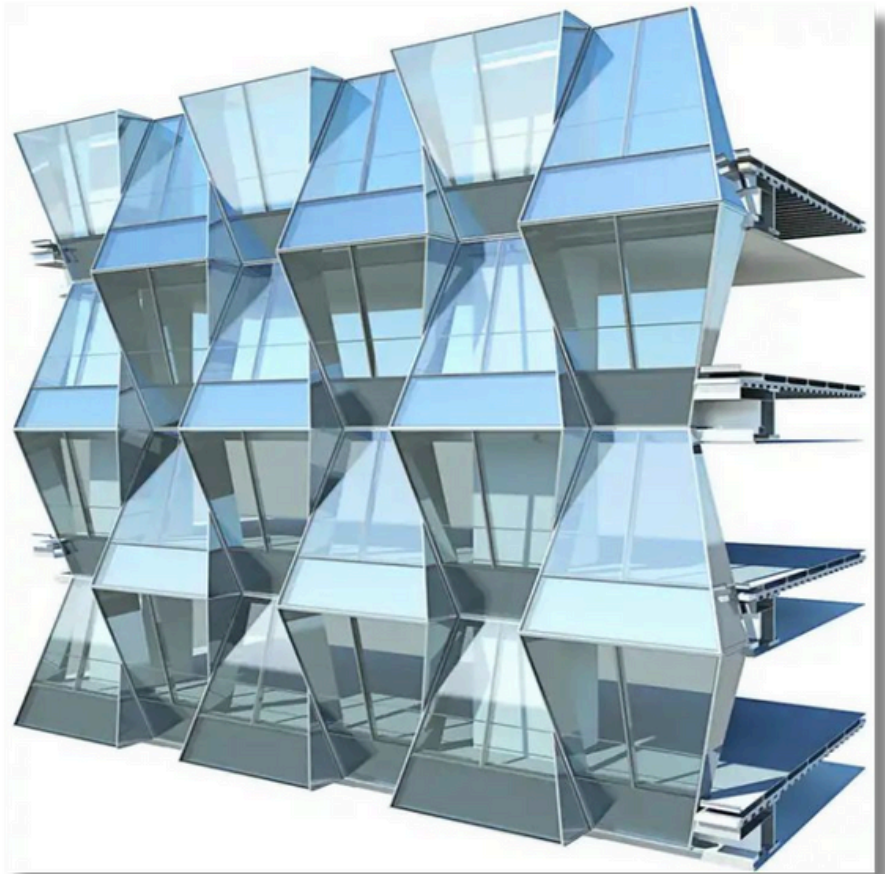




# ***CURTAIN WALL SECTIONS***

## ***OUR PRODUCTS***

- Lightweight yet Strong
- Corrosion-Resistant
- Non-Magnetic
- Excellent Conductivity
- Highly Malleable



For More Information

**9811141923, 8800705899**

Visit Know



**[www.kohlialuminium.com](http://www.kohlialuminium.com)**

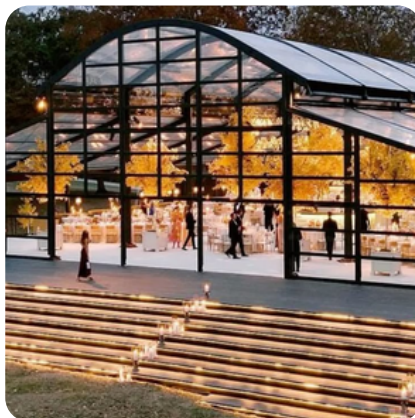




# TENT SECTIONS

## OUR PRODUCTS

- High Strength-to-Weight Ratio
- Durable & Long-Lasting
- Quick Locking/Joining System
- Elegant Finish



For More Information

**9811141923, 8800705899**

Visit Know

**[www.kohlialuminium.com](http://www.kohlialuminium.com)**

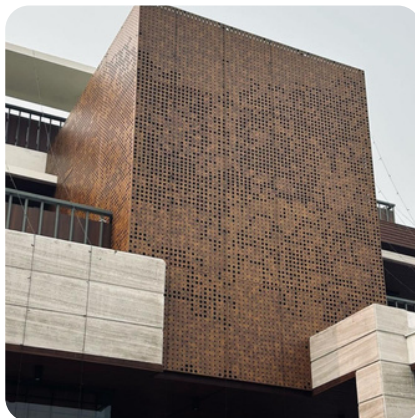
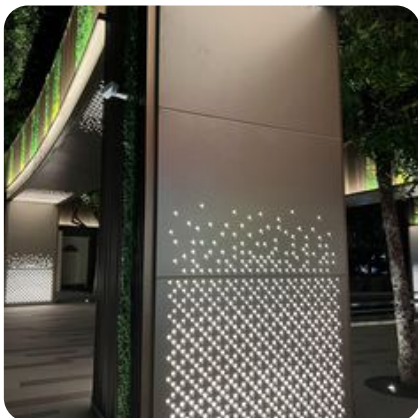




# PERFORATED ALUMINIUM PANELS

## OUR PRODUCTS

- **Lightweight yet Strong:**  
Offers high strength without adding excess weight.
- **Versatile Designs:**  
Available in various patterns, hole sizes, and shapes for aesthetic flexibility.
- **Low Maintenance:** Easy to clean and maintain over time.



For More Information

**9811141923, 8800705899**

Visit Know



**[www.kohlialuminium.com](http://www.kohlialuminium.com)**





# PARAMETRIC WALL

## OUR PRODUCTS

- **Dynamic Design:**  
Created using algorithms for complex and flowing forms.
- **Modern Aesthetic:** Adds a futuristic, artistic look to interiors and exteriors.
- **Structural Integrity:**  
Engineered for both visual appeal and strength.



For More Information

**9811141923, 8800705899**

Visit Know

**[www.kohlialuminium.com](http://www.kohlialuminium.com)**

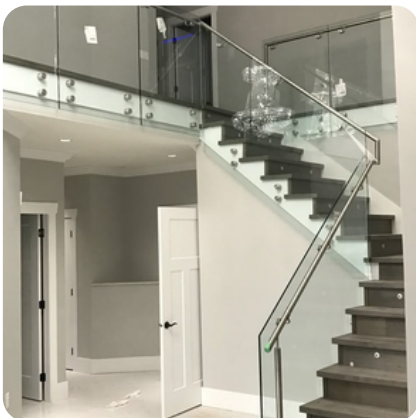




# ALUMINIUM RAILING SECTION

## OUR PRODUCTS

- **Sleek Aesthetics:** Offers a modern, clean look to any space.
- **Eco-Friendly:** Made from recyclable aluminium materials.
- **Applications:** Perfect for balconies, staircases, decks, terraces, and commercial spaces.



For More Information

**9811141923, 8800705899**

Visit Know



**[www.kohlialuminium.com](http://www.kohlialuminium.com)**





# ALUMINIUM CNC JALI

## OUR PRODUCTS

- Precision Cutting:  
Crafted with high-accuracy CNC machines for flawless designs.
- Corrosion-Resistant:  
Perfect for indoor and outdoor applications.
- Weather-Resistant:  
Withstands sun, rain, and pollution without fading or rusting.



For More Information

**9811141923, 8800705899**

Visit Know



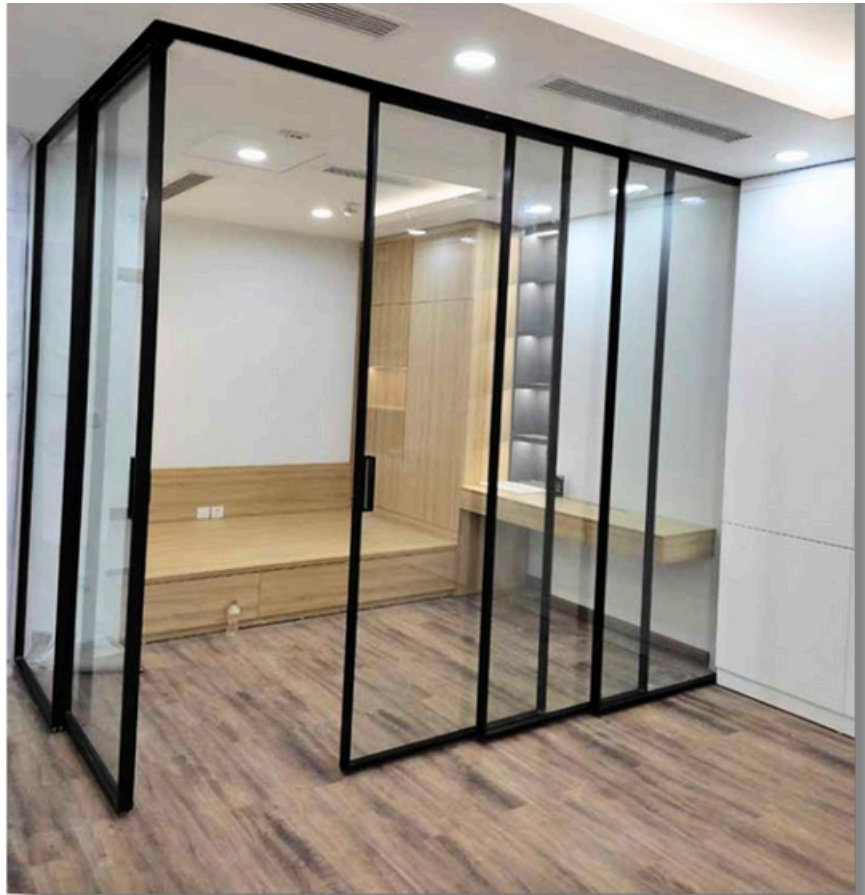
**[www.kohlialuminium.com](http://www.kohlialuminium.com)**



# ALUMINUM SLIM PROFILES

## OUR PRODUCTS

- Minimalistic Design:  
Sleek and slim lines for a modern, elegant look
- High Strength-to-Weight Ratio: Strong structure without bulky frames.
- Seamless Aesthetics:  
Provides a clean, frameless appearance.



For More Information

**9811141923, 8800705899**

Visit Know

**[www.kohlialuminium.com](http://www.kohlialuminium.com)**







# ALUMINIUM LED SKIRTING

## OUR PRODUCTS

- Modern Aesthetic: Adds a sleek, contemporary touch to interiors.
- Integrated Lighting: Combines skirting and soft ambient LED lighting.
- Space-Saving Design: Perfect for minimalist and compact spaces.



For More Information

**9811141923, 8800705899**

Visit Know [www.kohlialuminium.com](http://www.kohlialuminium.com)

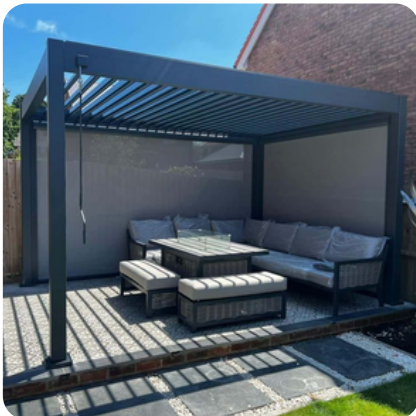




# ALUMINIUM PERGOLA

## OUR PRODUCTS

- Modern and Sleek Design: Enhances outdoor spaces with a stylish look.
- Corrosion-Resistant Aluminium: Long-lasting and rust-free
- Low Maintenance: Easy to clean and requires minimal upkeep.



For More Information

**9811141923, 8800705899**

Visit Know

**[www.kohlialuminium.com](http://www.kohlialuminium.com)**



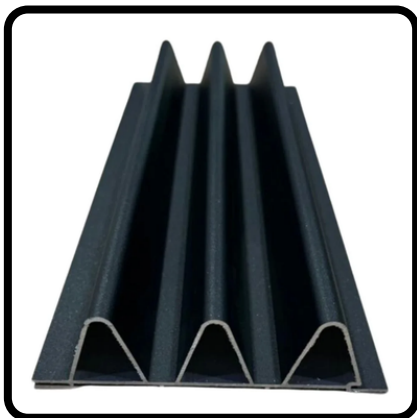




# ALUMINIUM LOUVERS

## OUR PRODUCTS

- Modern Aesthetic:  
Provides a sleek and stylish look to buildings.
- Excellent Ventilation:  
Allows air flow while maintaining privacy.
- Lightweight yet Durable: Strong structure without adding heavy load.



For More Information

**9811141923, 8800705899**

Visit Know



**[www.kohlialuminium.com](http://www.kohlialuminium.com)**



# FRAMELESS GLASS PARTITION

## OUR PRODUCTS

- Space-Saving Design: Perfect for compact or open-plan layouts.
- Strong and Durable: Made with toughened/safety glass for maximum strength.
- Sound Insulation: Helps reduce noise between spaces.



For More Information

**9811141923, 8800705899**

Visit Know



**[www.kohlialuminiun.com](http://www.kohlialuminiun.com)**





# MODULAR OFFICE SECTION

## OUR PRODUCTS

- Space-Saving Solutions: Ideal for maximizing use of available space.
- Easy Installation and Relocation: Quick setup and convenient to move.
- Functional and Efficient: Designed for productivity and organization



For More Information

**9811141923, 8800705899**

Visit Know

**[www.kohlialuminiun.com](http://www.kohlialuminiun.com)**

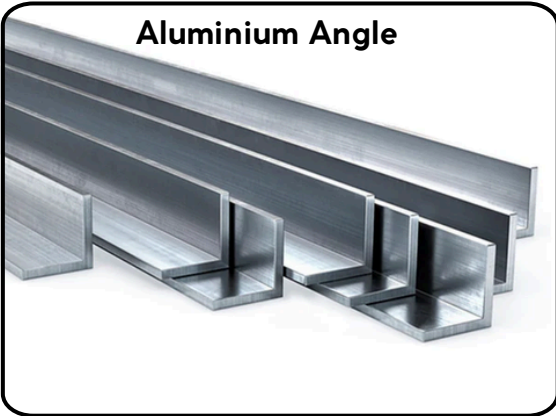




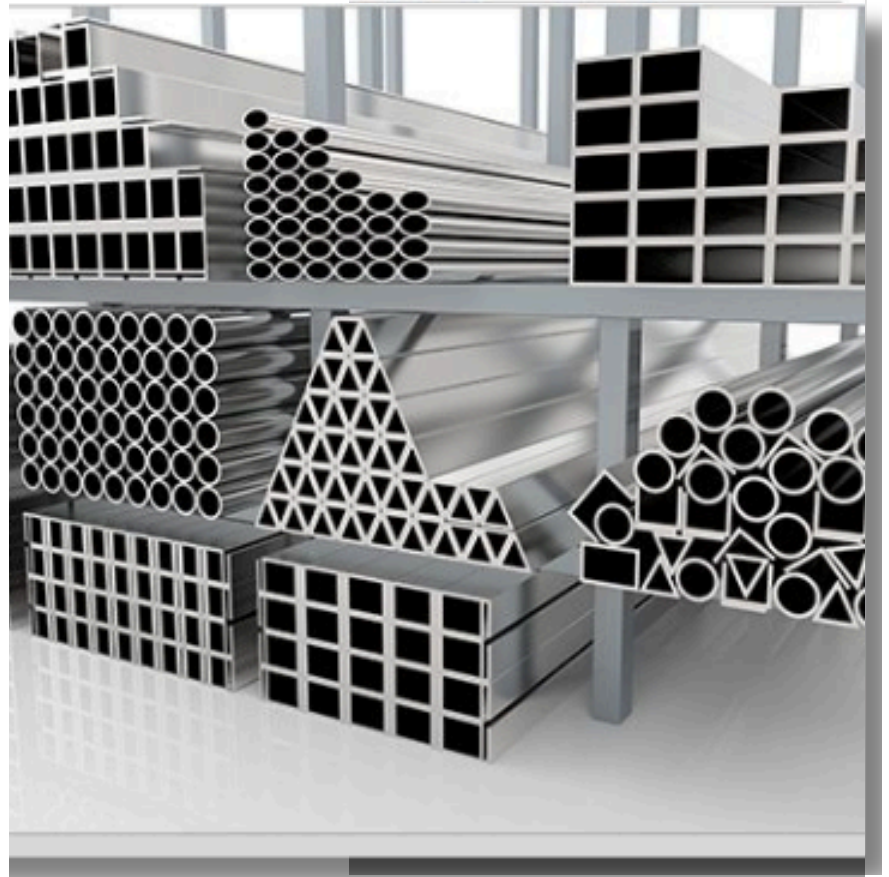
# **ALUMINIUM INDUSTRIAL SECTIONS**

## **OUR PRODUCTS**

**Aluminium Angle**



**Aluminium Hex Bar Rod**



**Aluminium Oval Tubes**



**Aluminium square Tubes**



**Aluminum Round Pipes**



For More Information

**9811141923, 8800705899**

Visit Know



**[www.kohli aluminium.com](http://www.kohli aluminium.com)**

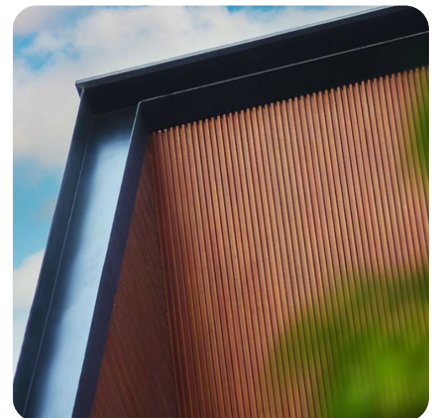
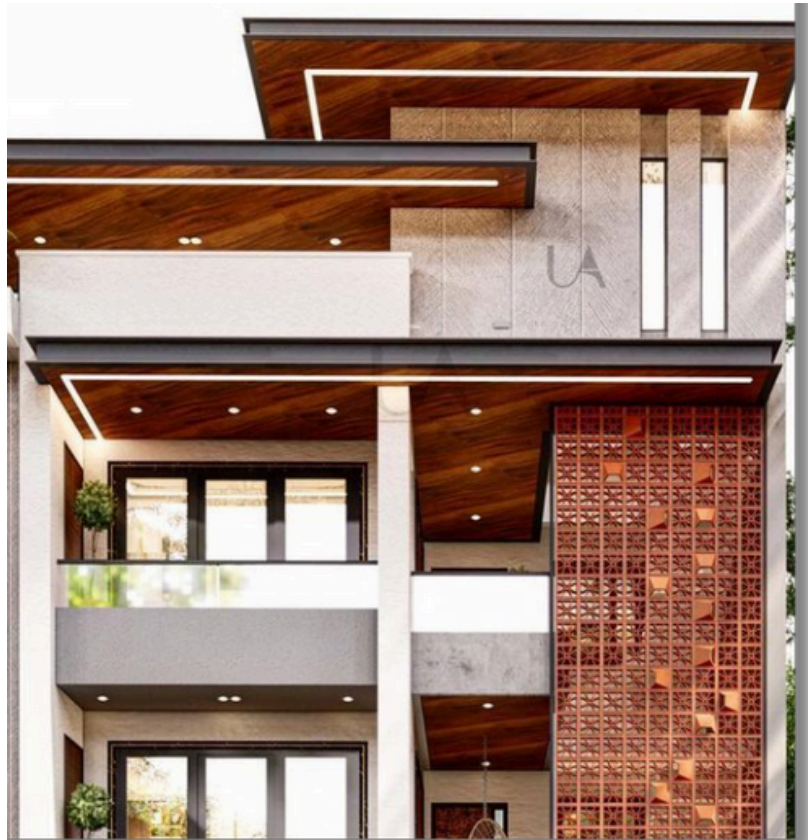




# ALUMINIUM GARTER

## OUR PRODUCTS

- High Structural Strength: Provides excellent support and stability.
- Cost-Effective Solution: Offers great value for structural and construction needs
- Smooth Surface Finish: Suitable for both functional and aesthetic uses.



For More Information

**9811141923, 8800705899**

Visit Know

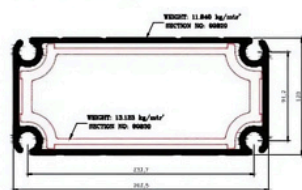
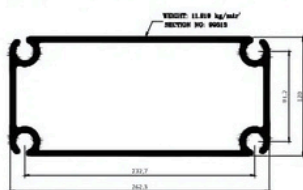
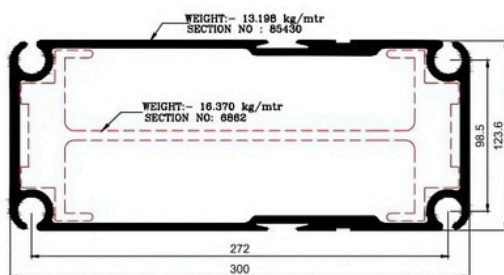
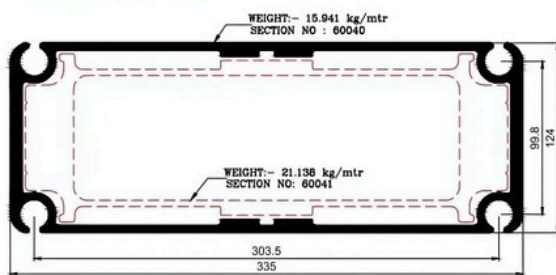


**[www.kohli aluminium.com](http://www.kohli aluminium.com)**



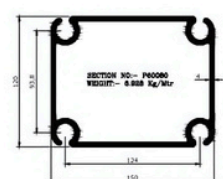
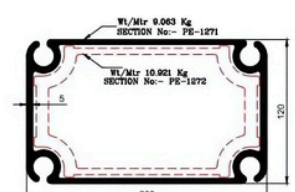
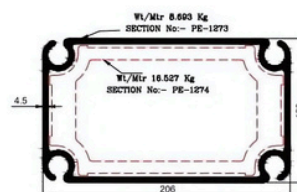
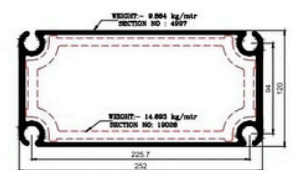
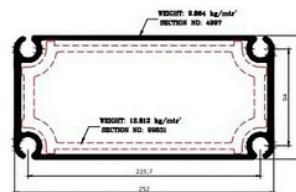
# TENT SECTION

## OUR PRODUCTS



- Lightweight and Portable: Aluminium tent house sections are incredibly lightweight, making them easy to transport and set up. Whether you're organizing outdoor events, exhibitions, or camping trips, their portability allows for quick assembly and dismantling without compromising on durability.

- Customizable Designs: Aluminium is a versatile material, allowing for customization of tent house sections in various shapes and sizes. Event organizers and users can easily adapt the structures to fit specific needs, accommodating different event layouts and themes



For More Information

**9811141923, 8800705899**

Visit Know



**www.kohli aluminium.com**





**Follow Us**



# Kohli Aluminium

Paharganj

 : 9811141923, 8800705899

 : [www.kohlialuminium.com](http://www.kohlialuminium.com)

 : [aluminium.kohli@gmail.com](mailto:aluminium.kohli@gmail.com)